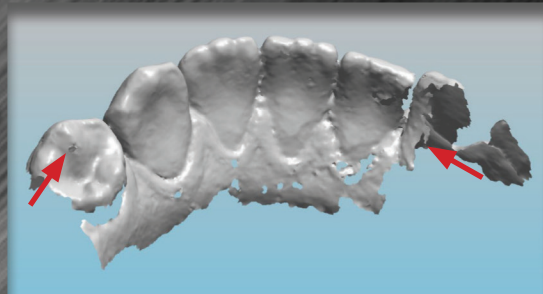


Intra-Oral Scanning Tips

Tips to Ensure a Quality Scan for an Accurate Restoration with Your Intra-Oral Scanner

Gingival Retraction

- Proper gingiva retraction strategy enables good scanning of the margin line.
- Intra-Oral scanners can only scan what is visible to the eye. If the margin is subgingival, the scanner will have a difficult time capturing the margin without excellent retraction techniques.
- The two-cord retraction technique is recommended for a visible margin line.



Insufficient scan data. Full scan of all anteriors are recommended on anterior restoration cases to recreate the same shape and size of the existing teeth and for articulation purposes.

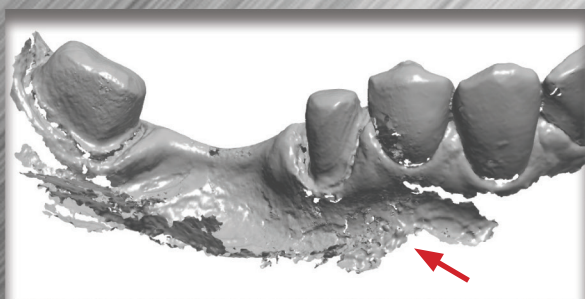
Moisture Control

- Dry teeth using compressed air.
- Be sure to dry the interproximal and gingival areas of the arch.
- Use cotton rolls, dry tips, and saliva ejectors to keep the mouth dry during scanning.
- Make sure the scanner wand is clean and free of moisture.

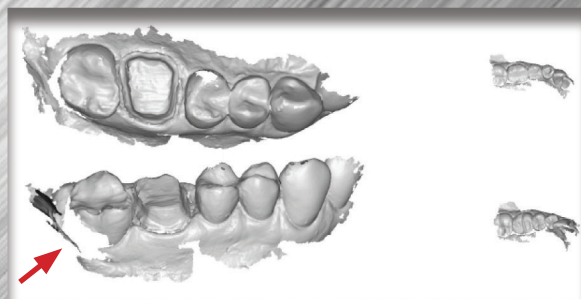
Scan Sprays (if required by scanner)

- Teeth must be dry before applying scan spray. Saliva and spray can mix and may cause false scan data.
- More is NOT better. Over-spraying can cause 3D images to be inaccurate.
- Sprayed teeth must be completely dry before scanning.

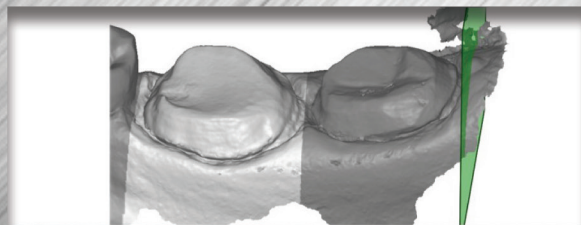
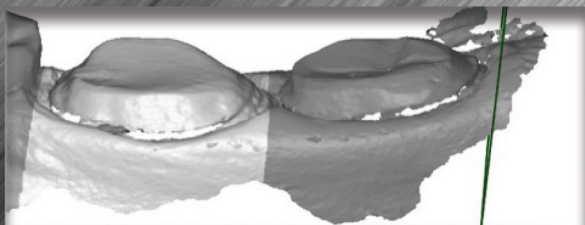
Do not submit a case with any missing data at the margins; this can compromise the fit. Scan at least 4 opposing teeth for the bite registration to ensure the bite is aligned properly.



Missing and distorted data on 3M scan. This is most likely caused by wet spray/excess moisture in the mouth.



Missing data on adjacent teeth and occlusion. This can cause issues when fabricating models and articulating the bite.



The lingual margin data is missing in the image on the left. The right image shows the scan after the margins are fixed by 3M. Notice how the fixed areas are not smooth. A new scan is recommended on this case.

Recommended Data to Capture When Scanning

Anterior Crowns

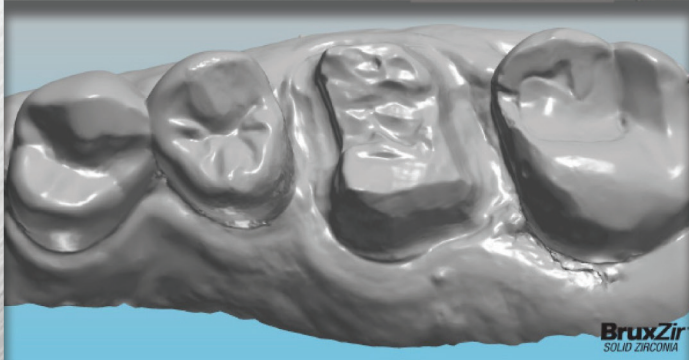
- Scan all anterior teeth so the restoration can be adapted to the patient's existing dentition.
- If possible, scan a pre-op model of existing pre-prepped teeth or temps for diagnostic/esthetic purposes.

Posterior Crowns

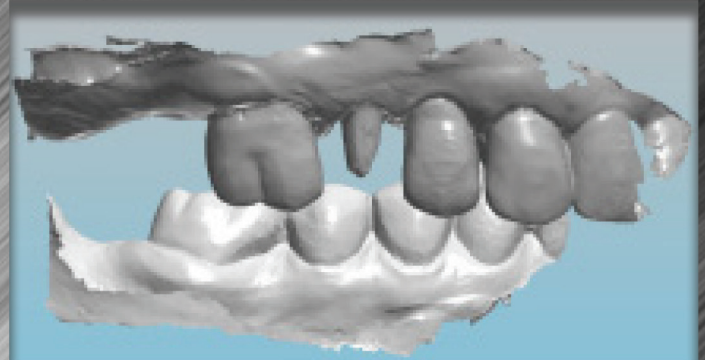
- Scan at least 2 adjacent teeth on the mesial & distal of the restoration.

Restorations with no posterior stop(s)

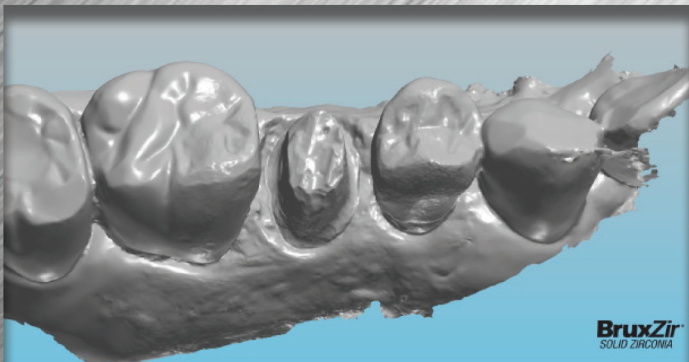
- Full arch maxillary and mandibular scan is needed to ensure bite is correct in design software.



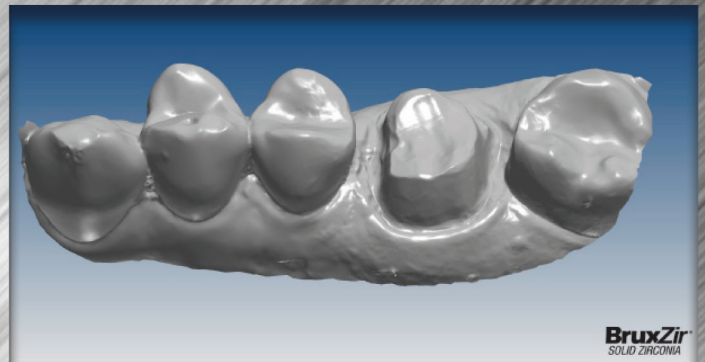
Proper retraction to accurately mark margin.
Sufficient scan data without missing data or distortion.



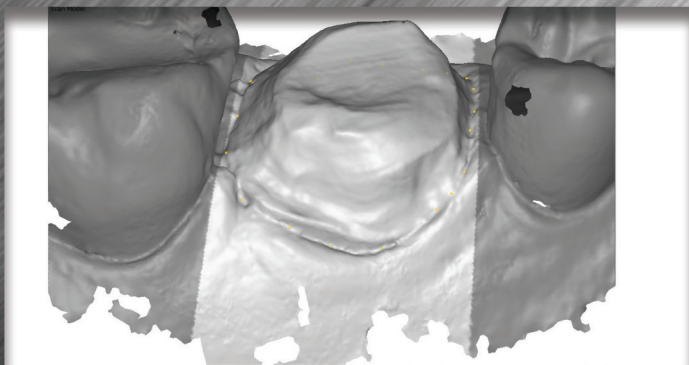
Sufficient scan of adjacent and opposing teeth to properly articulate models.



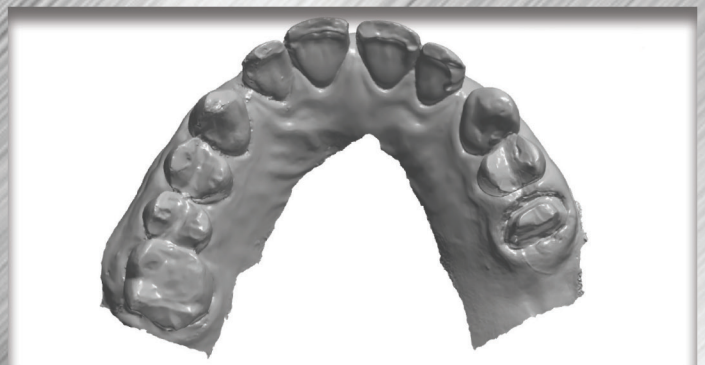
Clear view of margin and all teeth are complete.



Smooth scan of all teeth and margin line.



Small areas on the adjacent teeth or opposing will not affect the case.



A full arch was provided to aid in articulating the bite, since there is no posterior stop.

Instructions for
**Connecting Digital Impression Systems
and Submitting Scans to Oral Arts!**



Sending Your Scan: Because of the open architecture of Carestream and E4D Systems, your digital impression can be sent directly to our lab. Save or convert your digital impression files as “.stl” files, and submit your files through:
<http://www.oralartsdental.com/ddx/>

3Shape TRIOS®

Connecting with Oral Arts: Using 3Shape Communicate, select Oral Arts Dental Lab (Huntsville, Alabama) and a request will be sent directly to our laboratory. Once accepted, we will be able to receive all of your Trios scans.

Sending Your Scan: Submit your scans through 3Shape Communicate and Oral Arts will receive the file via email.



Connecting with Oral Arts: Add Oral Arts Dental Lab (Huntsville, Alabama) to your list by logging into your account at www.cerec-connect.com and selecting “My Favorite Labs” under the **MY ACCOUNT** menu on the left side of your screen. Search for us by typing Oral Arts Dental Lab. **Can't find us?** Try removing your zip code from the search bar and entering 35801. Once you've located our laboratory, check the box next to our name and click **ADD**.

Sending Your Scan: Submit scans through the *Cerec Connect Portal* and Oral Arts will receive an email notification in regards to your file.

3M ESPE

Connecting with Oral Arts: The 3M ESPE system gives you two options to add Oral Arts as one of your “Favorite Labs”.

- 1) Call 3M at 1-800-634-2249 and request to add Oral Arts Dental Lab (Huntsville, Alabama) to your “Favorite Labs” list
- OR
- 2) Select Oral Arts Dental Lab (Huntsville, Alabama), on the 3M lab list found by logging into your account at <https://casemanager.3m.com>

Sending Your Scan: Submit scans to the 3M Connection Center and we will receive an email notification in regards to your file.

iTero.

Connecting with Oral Arts: When using an iTero System you have two options to add Oral Arts as one of your “Favorite Labs”.

- 1) Call iTero at 1-800-577-8767 and request to add Oral Arts Dental Lab Inc, to your “Favorite Lab” list.
- OR
- 2) On the Cadent Lab List, search for Oral Arts Dental Lab Inc. Select our laboratory as a “Favorite Lab”.

Sending Your Scan: Submit your scans to Align Technology for margin marking. The scan will arrive at Oral Arts and be approved for production.

Save \$20 by choosing the model-less option!

OralArts

DENTAL LABORATORIES HUNTSVILLE, ALABAMA

Instructions for Connecting Digital Impression Systems and Submitting Scans to Oral Arts!



Digital Impression Systems save you time, money, and provide great convenience for your busy practice. We accept digital files from a wide variety of systems and offer \$20.00 off when choosing the model-less option. See the reverse side for more information and how to connect your digital impression system with Oral Arts today!

*Model-less Restorations offered by Oral Arts:
Single anterior/posterior units and up to
3 unit posterior bridges*

- BruxZir
- e.max
- Lava Ultimate

Save \$20 by choosing the model-less option!

www.oralartsdental.com 800.354.2075 **FREE** Shipping Both Ways!