



**OralArts**  
DENTAL LABORATORIES HUNTSVILLE, ALABAMA

**SYNERGY**  
Dental Partners

# Fee Schedule

[www.oralartsdental.com](http://www.oralartsdental.com)

800-354-2075

# Oral Arts pays the cost of shipping your case both ways! Call us today at 1-800-354-2075

Prices subject to change without notice. Published prices are base fees.

**\*Note:** All prices include metal where applicable, parts extra. Prices are subject to change without notice or surcharge due to the volatility of noble alloy prices.



## Metal Free Restorations

<b>Element-Z 5 Day Turn-Around</b>	
Model-Less Element-Z from your scan file 3 Day Turn-Around	75.65
Element-Z Solid Zirconia - Crowns/Bridges	92.65
Element-Z Lingual with Porcelain facial	126.65
Element-Z fabricated in Select Dept. 10 Day Turn-Around	170.00
<b>Ultra-Z Esthetic 5 Day Turn-Around</b>	
Model-Less Ultra-Z Esthetic from your scan file 3 Day Turn-Around	75.65
Ultra-Z Esthetic - Crowns/Bridges	92.65
Ultra-Z Esthetic fabricated in Select Dept. 10 Day Turn-Around	170.00
<b>Forte YZr® 5 Day Turn-Around (Oral Arts Exclusive)</b>	
Porcelain Veneered Zirconia Crowns/Bridges	126.65
Forte YZr Cut Back & Layered	143.65
Forte YZr fabricated in Select Department 10 Day Turn-Around	255.00
<b>IPS e.max® 5 Day Turn-Around</b>	
Model-Less IPS e.max from your scan file 3 Day Turn-Around	75.65
IPS e.max - Crowns/Bridges/Veneers/Inlays	92.65
IPS e.max Cut Back & Layered	109.65
IPS e.max fabricated in Select Department 10 Day Turn-Around	255.00
<b>IPS Empress® 5 Day Turn-Around</b>	
IPS Empress Esthetic - Crowns/Veneers/Inlays	127.50
IPS Empress Esthetic Cut Back & Layered	144.50
IPS Empress Esthetic fabricated in Select Department 10 Day Turn-Around	255.00
<b>Lava® 5 Day Turn-Around</b>	
Porcelain to Zirconia Crowns/Bridges	160.65
Lava Zirconia Copings	58.65
Lava fabricated in Select Department 10 Day Turn-Around	263.50

	<b>Crown Tattoos</b>	<b>85.00</b>
---	----------------------	--------------



## Digital Impressions

<b>Model-less 3 Day Turn-Around</b>	
Element-Z, Ultra-Z Esthetic or IPS e.max	75.65
Oral Temp CAD/CAM Provisionals	16.15
Screw-Retained Element-Z, Ultra-Z, IPS e.max crown 5 Day Turn-Around	248.20
<b>With a Printed Model 5 Day Turn-Around</b>	
Element-Z, Ultra-Z Esthetic or IPS e.max	92.65
Oral Temp CAD/CAM Provisionals	24.65
Forte YZr	126.65
Element-Z Lingual with Porcelain Facial	126.65
PFM (Refer to prices in PFM Section)	
<b>* Sirona Cerec Models</b> 9 Day Turn-Around	\$17 per set



## PFM Restorations

<b>5 Day Turn-Around</b>		
<b>*Conventional</b>		<i>Metal Occlusal</i>
Porcelain to Base	101.15	111.35
*Porcelain to Noble	118.15	140.25
*Porcelain to Hi-Noble White	126.65	148.75
*Porcelain to Hi-Noble Yellow	152.15	174.25
PFM fabricated in Select Department	(10 Day Turn-Around)	255.00
<b>Maryland Bridge 5 Day Turn-Around</b>		
Zirconia Maryland Bridge complete with wings		312.80
Porcelain Pontic, metal included		123.25
Wraps		32.30
Etch		32.30
Re-Etch		21.25

Call us at 1-800-354-2075 for more information

# Oral Arts pays the cost of shipping your case both ways! Call us today at 1-800-354-2075

Prices subject to change without notice. Published prices are base fees.

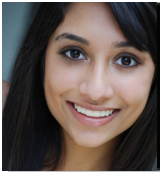
**\*Note:** All prices include metal where applicable, parts extra. Prices are subject to change without notice or surcharge due to the volatility of noble alloy prices.



## Oral Arts Select

10 Day Turn-Around	
Element-Z or Ultra-Z Esthetic	170.00
IPS e.max	255.00
IPS Empress Esthetic	255.00
Forte YZr	255.00
Lava	263.50
PFM	255.00
Select PMMA Hybrid (Bridge Only)	382.50
7 Day Turn-Around	
Indirect Composite	
5 Day Turn-Around	
Gradia Composite - Inlays/Onlays/Crowns	109.65

	Base	Noble	Hi-Noble
Direct Post/Core	42.50	44.20	45.05
Indirect Post/Core	47.60	50.15	51.00
Telescopic Crown/Coping	63.75	68.00	69.70



## Combined Crown/Partial

3 Day Turn-Around	
Fixed Attachment Labor per arch	117.30
Construct to Fit Crown to Partial	41.65
Dolder or Hader Bar, plus metal	46.75
Hader Bar with Clip & Housing	75.65
Survey and Design Crown for Partial	34.00



## Crown & Bridge - Miscellaneous

3 Day Turn-Around		Base	Noble	Hi-Noble
*Metal Try-in	67.15	84.15	118.15	
Add Porcelain to Metal Try-in			45.90	
Cut Back and Layer Porcelain			17.00	
Duplicate Model			11.05	
Epoxy Model			34.00	
Interlock			51.00	
Milled Rest			53.55	
Opposing Units, per unit			7.65	
Pink Tissue, per unit			28.05	
Porcelain Butt Margin			36.55	
Pour and Return Models			21.25	
Composite Acrylic Facing on Crown			34.00	
Strip and Rebuild Porcelain, per unit			50.15	
Reduction Coping			12.75	



## Temporaries & Diagnostic Wax-Ups

4 Day Turn-Around	
Model-Less Oral Temp CAD/CAM Provisionals per unit	16.15
Oral Temp CAD/CAM Provisionals, per unit	24.65
Oral Temp Fiber Force Reinforcement, per case	41.65
Screw-Retained Oral Temp	179.35
Diagnostic Wax-up	21.25
Surgical Tray/Prep Guide	19.55
Temporary Template	21.25
Duplicate Model	11.05



## Full Cast Restorations

3 Day Turn-Around	
Base Metal	92.65
*White Noble	118.15
Argenco Y + Yellow Noble (Flat fee no alloy surcharge)	148.75
Yellow Noble	118.15
*White Hi-Noble Crown or Inlay	135.15
*Yellow Hi-Noble Crown or Inlay	135.15



## Dentures

5 Day Turn-Around	
Economy Denture	
Includes custom tray, bite rim, set-up & try-in, process and finish in Lucitone 199 Acrylic. Includes Economy Teeth	294.95

# Oral Arts pays the cost of shipping your case both ways! Call us today at 1-800-354-2075

Prices subject to change without notice. Published prices are base fees.

**\*Note:** All prices include metal where applicable, parts extra. Prices are subject to change without notice or surcharge due to the volatility of noble alloy prices.

Dentures Cont...	
<b>Premium Denture</b> Includes custom tray, bite rim, set-up & try-in, process and finish in Lucitone 199 Acrylic. Includes Premium Teeth	357.85
<b>IvoBase Premium Denture</b> Includes custom tray, bite rim, set-up & try-in, process and finish in IvoBase Premium Injection Acrylic. Includes Premium Teeth	385.05
<b>Immediate Denture with Economy Teeth</b> Includes: 6 extractions, setup, process, and finish with economy teeth.	232.05
<b>Immediate Denture with Premium Teeth</b> Includes: 6 extractions, setup, process, and finish with premium teeth.	294.95
<b>Ala Carte Dentures</b>	
Avoid Embarrassment Denture	127.50
Bite Rim	33.15
Bite Rim on IvoBase Base	76.50
Bite Rim on Processed Base	51.00
Bite Rim on Sprinkled Base	42.50
Custom Tray with Handle	33.15
Clear Duplicate Denture	85.00
Clear Duplicate Denture w/ Barium Sulfate	106.25
Denture Setup	38.25
FiberForce Reinforcement	89.25
Immediate, per tooth to be extracted	3.40
IvoBase Injection Processing Extra	27.20
Repair	76.50
Name in Denture	17.00
Process & Finish, Premium Acrylic	120.70
Soft Liner Process & Finish w/ Lucitone 199	170.00
Reset to New Bite	27.20
Strengthening Bar	28.90
Screw-Retained Set-up	63.75
Screw-Retained Reset	42.50
Teeth	Market Price
Try-in Wax Set-up	17.00
Rebase Denture	157.25
Same Day Rebase/Reline/Repair Denture	+34.00
Hard Reline	110.50
Soft Reline	131.75



## Partials

10 Day Turn-Around	
<b>Cast Chrome Partials</b>	Complete Partial includes Framework, Setup, and Premium Acrylic Finish
Includes initial try-in, without teeth	296.65
Conventional or Hidden Clasp Framework	127.50
Acrylic Partial, without teeth and clasps	120.70
<b>Ala Carte Partials</b>	
Attachment Labor per Arch	110.50
All Metal Dummy or Backing	34.00
Cast Clasp w/ laser weld (includes laser weld fee)	68.00
Complete Nesbit without teeth (Cast Unilateral)	170.00
Composite Facing on Metal Backing	34.00
Full Cast Base	106.25
Repair Cast/Flexible	76.50/89.25
Occlusal Onlay	39.95
Partial Bite Rim	27.20
Process & Finish, Lucitone 199	120.70
Reline	110.50
Set-up Cast/Flexible	31.45/51.85
Swing Lock/DE Hinge Partial Frame	276.25
Try-in Wax Set-up	17.00
Wrought Wire Clasp	25.50
<b>Cu-sil® Partials</b>	
10 Day Turn-Around	
Set-up	38.25
Process & Finish, Premium Acrylic	230.35
Try-in Wax Set-up	17.00
Cu-sil® Gasket Reline	136.00
Cu-sil® Hard Reline & Gasket Reline	212.50
Cu-sil® Cleaner	8.93

# Oral Arts pays the cost of shipping your case both ways! Call us today at 1-800-354-2075

Prices subject to change without notice. Published prices are base fees.

**\*Note:** All prices include metal where applicable, parts extra. Prices are subject to change without notice or surcharge due to the volatility of noble alloy prices.



## Flexible Partial

### 6 Day Turn-Around

DuraFlex Partial & TCS Unbreakable w/ Economy Teeth	221.00
Unilateral TCS Unbreakable or DuraFlex Partial	141.95
Flexible Metal Combo w/ Economy Teeth	290.70
All Metal Dummy or Backing	34.00
Composite Facing	34.00
Flexible Partial Adjustment Kit	56.95
Flexible Partial Occlusal Rest	34.00
Process and Finish	169.15
Repair	89.25
Set-up	51.85
Try-in Wax Set-up	17.00
Flexible Partial Denture Cleaner	15.30

Model-less Element-Z, Ultra-Z Esthetic, or IPS e.max Screw-Retained Crown <b>5 Day Turn-Around</b>	214.20
*Prices for items below do not include alloy surcharge or UCLA	
Screw-Retained PFM Noble Crown* <b>10 Day Turn-Around</b>	232.90
Screw-Retained PFM High Noble White* <b>10 Day Turn-Around</b>	241.40
Screw-Retained Oral Temp <b>5 Day Turn-Around</b>	179.35
*Noble and High Noble alloy surcharge not included	

## Implant Fee Schedule: Predictable Package Pricing

\*Prices not applicable to the Straumann Synocta platforms and BioHorizons 3.0 platforms.



## Restorations Over Custom CAD/CAM Abutments

### 10 Day Turn-Around

Crown over custom abutment price includes: shipping both ways, model work with soft tissue, lab analog and screw, Custom Titanium or Zirconia abutment, final crown, and clinical screw.

**Additional implant parts, if needed, are not included.**

**Prices shown are for the following implant platforms only:**

Astra Tech, BioHorizons, Biomet 3i, Nobel Biocare, Straumann Bone Level Implant, Zimmer

Element-Z Solid Zirconia, Ultra-Z Esthetic, IPS e.max, or Lava Ultimate Crown (with Custom Ti or Zr Abutment)	384.20
Forte YZr Porcelain to Zirconia Crown (with Custom Ti or Zr Abutment)	418.20
PFM Non-Precious Crown* (with Custom Ti) *Noble and High Noble Crown alloy surcharge not included	392.70



## Screw-Retained Implant Restorations

Screw-retained crown price includes: model work with soft tissue, MZ adapter, implant labor, lab analog, lab screw, and final crown

**Additional implant parts, if needed, are not included.**

**Prices shown are for the following implant platforms only:** Astra Tech, BioHorizons, Biomet 3i, Branemark, Nobel Biocare, Straumann Bone Level Implant, Zimmer

Element-Z, Ultra-Z Esthetic, or IPS e.max Screw-Retained Crown <b>5 Day Turn-Around</b>	268.60
---	--------



## Custom Abutments

### 10 Day Turn-Around

OAL Custom Titanium Abutment	254.15
OAL Custom Zirconia Abutment with Ti-Base	254.15
OAL Custom Titanium Gold Hue Abutment	288.15
3i Encode Custom CAD/CAM Titanium Abutment w/ Gold Screw, Analog, Robocast	406.30
Atlantis Custom Titanium Abutment	305.15
Atlantis Custom Titanium Gold Hue Abutment	338.30
BioHorizons Custom Titanium Abutment	330.65
BioHorizons Custom Titanium Abutment with Laser-Lok	356.15
BioHorizons Custom Zirconia Abutment	285.60
Nobel Biocare Custom Titanium or Zirconia	271.15
Straumann Custom All Zirconia Abutment	364.65
Straumann Custom Titanium Abutment	313.65
Straumann Custom Zirconia Abutment with Ti-Base	336.60
Anodize Gold or Pink Existing Implant Component	34.00



## Element-Z Screw-Retained Hybrid

### 10 Day Turn-Around

**Price w/parts Includes:** Shipping to and from lab for all steps, 2 soft tissue models, 4 Implant Analogs, Verification Jig with 4 cylinders, Bite Rim, Screw-Retained Setup w/2 cylinders & Wax Try-In w/ Economy Teeth, implant labor, Comfort H/S bite splint and final bridge with pink tissue and new cylinders.

**Prices shown are for the following implant platforms only:**

Astra, Zimmer, Biohorizons, Biomet 3i, Straumann bone level, Nobel Biocare, Implant Direct Legacy.

**\*Multi-unit abutments or additional implant parts are not included.**

Bridge only w/o parts or preliminary steps	1,269.05
Element-Z Screw-Retained Hybrid w/ 4 implants w/parts	2,361.30
Element-Z Screw-Retained Hybrid w/ 5 Implants w/parts	2,494.75
Element-Z Screw-Retained Hybrid w/ 6 Implants w/parts	2,628.20

# Oral Arts pays the cost of shipping your case both ways! Call us today at 1-800-354-2075

Prices subject to change without notice. Published prices are base fees.

**\*Note:** All prices include metal where applicable, parts extra. Prices are subject to change without notice or surcharge due to the volatility of noble alloy prices.

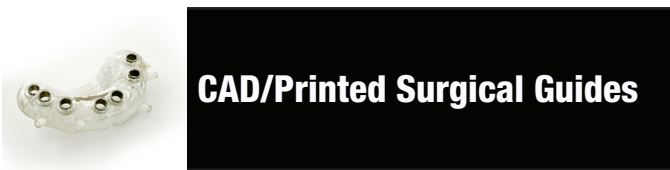
Element-Z Screw-Retained Hybrid Cont...	
SELECT Zirconia Hybrid cut back & layered teeth and gingiva (bridge only) w/o parts	2,969.05
SELECT Zirconia Hybrid cut back & layered teeth and gingiva w/4 implants w/ parts	4,061.30
SELECT Zirconia Hybrid cut back & layered teeth and gingiva w/5 implants w/ parts	4,194.75
SELECT Zirconia Hybrid cut back & layered teeth and gingiva w/6 implants w/ parts	4,328.20
SELECT PMMA Hybrid (Bridge Only) 7 Day Turn-Around w/o parts	382.50
CAD/CAM PMMA Hybrid with Pink Composite w/o parts	280.50



## Stand Alone Crown & Bridge Implant Items

10 Day Turn-Around

Epoxy Model for Pour Direct Cases	34.00
Soft Tissue Model	21.25
Zirconia Hybrid Labor per arch	77.35
Screw-Retained Crown Labor per unit	77.35
Prepare Stock Implant Abutment	85.00
Verification Jig without Parts	68.00
Anodize Gold or Pink Existing Implant Component	34.00
Implant Crown Rush Fee	42.50/per unit/ per day
Custom Wax/Cast Abutment Labor	127.50



## CAD/Printed Surgical Guides

5-15 Day Turn-Around

Surgical Planning (Per Plan)	127.50
CAD Printed Surgical Guide	106.25



## Implant Removable and Fixed Removable

10 Day Turn-Around

Prices will vary for more implant components or attachments than are shown below. **Additional implant parts, if needed, are not included.** CAD/CAM bar prices shown are for the following implant platforms only: Astra Tech, BioHorizons, Biomet 3i, Branemark, Nobel Biocare, Straumann, Thommen, Zimmer

Implant removable and fixed removable cont...	
<b>Mini Implant Overdenture on 2 Implants w/ Economy Teeth</b> (Price includes: Shipping to and from lab for all steps, 2 Analogs, 2 O-Ring Housings, Labor, Model Work, Custom Tray, Bite Rim, Setup & Wax Try-In, Process & Finish with Economy Teeth)	522.75
On 2 Implants w/ Premium Teeth	585.65
On 3 Implants w/ Economy Teeth	573.75
On 3 Implants w/ Premium Teeth	636.65
On 4 Implants w/ Economy Teeth	624.75
On 4 Implants w/ Premium Teeth	687.65
On 5 Implants w/ Economy Teeth	675.75
On 5 Implants w/ Premium Teeth	738.65
<b>Locator Overdenture on 2 Implants w/ Economy Teeth</b> (Price includes: Shipping to and from lab for all steps, 2 Locator Abutments, Analogs, Housings, Labor, Model Work, Locator, Bite Rim, Setup & Wax Try-In, Process & Finish with Economy Teeth) Call for Straumann pricing	863.60
On 2 Implants w/ Premium Teeth	926.50
On 3 Implants w/ Economy Teeth	1,074.40
On 3 Implants w/ Premium Teeth	1,137.30
On 4 Implants w/ Economy Teeth	1,285.20
On 4 Implants w/ Premium Teeth	1,348.10
On 5 Implants w/ Economy Teeth	1,496.00
On 5 Implants w/ Premium Teeth	1,558.90
<b>Screw-Retained Hybrid Denture on 4 Implants w/ Economy Teeth</b> (Price includes: Shipping to and from lab for all steps, 2 soft tissue models, 4 Implant Analogs, Verification Jig with 4 cylinders, Bite Rim, Screw-Retained Setup w/4 cylinders & Wax Try-In, Precision-Milled Titanium Bar & Screws, Labor, Comfort H/S bite splint, IvoBase Process & Finish with Economy Teeth) Prosthetic Screws extra	2,166.65
On 4 Implants w/ Premium Teeth	2,229.55
On 5 Implants w/ Economy Teeth	2,566.15
On 5 Implants w/ Premium Teeth	2,629.05
On 6 Implants w/ Economy Teeth	2,965.65
On 6 Implants w/ Premium Teeth	3,028.55
<b>Locator CAD/CAM Milled Bar Overdenture w/ Economy Teeth</b> (Price includes: Shipping to and from lab for all steps, Implant Analogs, Housings & Attachments, Verification Index, Precision-Milled Titanium Bar, Labor, Model Work, Bite Rim, Screw Retained Setup & Wax Try-In, Process & Finish with Economy Teeth) Prosthetic Screws extra	

# Oral Arts pays the cost of shipping your case both ways! Call us today at 1-800-354-2075

Prices subject to change without notice. Published prices are base fees.

**\*Note:** All prices include metal where applicable, parts extra. Prices are subject to change without notice or surcharge due to the volatility of noble alloy prices.

CAD/CAM Milled Bar Overdenture Cont...	
On 2 Implants w/ Economy Teeth	1,479.85
On 2 Implants w/ Premium Teeth	1,542.75
On 3 Implants w/ Economy Teeth	1,959.25
On 3 Implants w/ Premium Teeth	2,022.15
On 4 Implants w/ Economy Teeth	2,523.65
On 4 Implants w/ Premium Teeth	2,586.55
On 5 Implants w/ Economy Teeth	2,889.15
On 5 Implants w/ Premium Teeth	2,952.05
On 6 Implants w/ Economy Teeth	3,254.65
On 6 Implants w/ Premium Teeth	3,317.55

Nightguards, splints, and bleaching trays Cont...	
Day Guard	85.85
Gelb Splint	86.70
Hard Acrylic Splint Sprinkled	73.95
Helmet Strap	18.70
IvoBase Clear Injection Splint	111.35
Soft Splint	39.95
Variflex H/S Splint (Heat Softened)	118.15
Vacuum Splint Hard	40.80



## Stand Alone Denture Implant Items

10 Day Turn-Around	
Locator/O-Ring Attachment Overdenture Labor per arch	117.30
Pour and Return Models (3 Day Turn-Around)	21.25
Screw-Retained/Implant Retained Bite Rim	41.65
Screw-Retained Hybrid Denture Labor per Implant	35.70
Screw-Retained Process & Finish	170.00
Screw-Retained Setup	63.75
Screw-Retained Reset	42.50
Soft Tissue Model	21.25
Surgical Implant Guide	81.60
Titanium CAD/CAM Implant Bar 4 implants	1,237.60
Titanium CAD/CAM Implant Bar 5 implants	1,547.00
Titanium CAD/CAM Implant Bar 6+ implants	1,856.40
Verification Jig without parts	68.00



## Sleep Apnea Devices

5 Day Turn-Around	
TAP 3 Elite TL	315.35
myTAP 1 Day Turn-Around	102.85
dreamTAP	330.65
myTAP/dreamTAP Patient Education Kit w/display case	212.50
Myerson EMA First Step Doctors Kit	60.35
Myerson EMA First Step Appliance	77.35
Myerson EMA Sleep Apnea Device	175.95
QuietNite Sleep Appliance	237.15



## Nightguards, Splints, Sports Mouthguards & Bleaching Trays

5 Day Turn-Around	
AstronCLEAR Splint	77.35
AstronCOLOR Splint	85.85
Bite Soft Splint	101.15
Bleaching Tray	42.50
Clear Sports Mouthguard	45.90
Colored Sports Mouthguard	60.35
Comfort H/S Splint	50.15
Colored Comfort H/S Splint	67.15
Comfort Hard Splint	41.65



## SomnoMed

21 Day Turn-Around	
SomnoMed Signature Line	
SomnoDent Flex	446.25
SomnoDent Edent - Flex	527.00
SomnoDent - Classic	403.75
SomnoDent Edent - Classic	480.25
SomnoDent Classic - Lingualless	403.75
SomnoDent G2 - Flex	531.25
SomnoDent G2 - Classic	531.25
SomnoDent G2 Edent - Flex	612.00
SomnoDent Fusion - Classic	467.50
SomnoDent Fusion - Flex	467.50
SomnoMed Standard Line	
SomnoDent Air	280.50
SomnoDent Air +	297.50

# Oral Arts pays the cost of shipping your case both ways! Call us today at 1-800-354-2075

Prices subject to change without notice. Published prices are base fees.

**\*Note:** All prices include metal where applicable, parts extra. Prices are subject to change without notice or surcharge due to the volatility of noble alloy prices.

SomnoMed Cont...	
Standard - Bite Ramp	17.00
Standard - Anterior Opening	17.00
Standard - ER Hooks	17.00
Standard - Model Pour	8.50
SomnoDent Air - Extended Warranty - 1 year	63.75
SomnoDent Air - Extended Warranty - 2 year	102.00
Telescopic Herbst - Classic	310.25
Telescopic Herbst - Flex	335.75
SomnoDent Herbst Advance - Flex	344.25



## Orthodontics

5 Day Turn-Around	
Circumferential Hawley	48.45
Customized Hawley	23.80
Essix Retainer	44.20
Hawley Retainer w/clasps	45.05
Invisible Retainer	44.20
Modified Hawley	52.70
Modified Spring Retainer 6/6	69.70
Per tooth reset	14.45
Spring Retainer 3/3 or 4/4	39.95
Functional Appliances	
6 Day Turn-Around	
Schwartz	106.25
Upper or Lower Sagittal with 2 screws	120.70
Upper or Lower Sagittal with 3 screws	151.30
Fixed Appliances (bands not included)	
3 x 3 Lingual Arch	34.85
6 x 6 Lingual Arch	39.10
Bonded Palatal Expander w/ Hyrax Screw	99.45
Palatal Expander w/ Hyrax Screw	75.65
Fixed Appliances (bands not included)	
HAAS Palatal Expander	87.55
Habit or Crib	61.20
Nance	44.20
Quad-Helix	56.95
Space Maintainers	33.15

Additional	
Adams or Ball Clasp, each	25.50
Auxiliaries or Finger Springs	14.45
Each Band	14.45
Expansion Screw	26.35
Labial Bow	22.95
Lingual Bar	21.25
Repair	34.00
Orthodontic Models, per set	43.35
Plastic Teeth	Market Price
Solder Hook or Solder Pin	14.45
Colored Retainers	
First color Extra	2.55
Each Additional Color	5.10
Ortho Wrought Wire Clasp	25.50



## Clinician's Choice Quad-Tray Xtreme Disposable Metal Impression Trays

Quad-Tray Xtreme	
Posterior Quad-Tray (50 pack)	77.35
Posterior Quad-Tray (250 pack)	318.75
Anterior Quad-Tray (50 pack)	80.75
Quad-Tray Trial Pack (20 posterior, 20 XL, 10 anterior)	74.80
Quad-Tray XL	
Extra Long Full Quadrant (40 pack)	74.80



## Adjustment Kits

Komet Lithium Disilicate & Solid Zirconia Adjustment Kit	67.15
Flexible Partial Adjustment Kit	56.95
Flexible Partial Kit Replacement Parts	
Dedeco 6105 Red Trimmers	6.80
TCS Green Points 4501-01	0.85
TCS Small Rubber Points 4511-01S	1.70
Spiral/Corkscrew Mandrel	0.85
Shofu FL-2 Stones	2.55
Dedeco 4593 Blue Points	0.85