



**OralArts**

*Smile Source*  
SIGNATURE DENTAL CARE

DENTAL LABORATORIES HUNTSVILLE, ALABAMA

# Fee Schedule

[www.oralartsdental.com](http://www.oralartsdental.com)

800-354-2075

# Oral Arts pays the cost of shipping your case both ways! Call us today at 1-800-354-2075

Prices subject to change without notice. Published prices are base fees.

**\*Note:** All prices include metal where applicable, parts extra. Prices are subject to change without notice or surcharge due to the volatility of noble alloy prices.



## Metal Free Restorations

<b>Element-Z 5 Day Turn-Around</b>	
Model-Less Element-Z from your scan file 3 Day Turn-Around	85.00
Element-Z Solid Zirconia - Crowns/Bridges	99.00
Element-Z Lingual with Porcelain facial	139.00
Element-Z fabricated in Select Dept. 10 Day Turn-Around	200.00
<b>Ultra-Z Esthetic 5 Day Turn-Around</b>	
Model-Less Ultra-Z Esthetic from your scan file 3 Day Turn-Around	85.00
Ultra-Z Esthetic - Crowns/Bridges	99.00
Ultra-Z Esthetic fabricated in Select Dept. 10 Day Turn-Around	200.00
<b>Forte YZr® 5 Day Turn-Around</b> (Oral Arts Exclusive)	
Porcelain Veneered Zirconia Crowns/Bridges	139.00
Forte YZr Cut Back & Layered	159.00
Forte YZr fabricated in Select Department 10 Day Turn-Around	260.00
<b>IPS e.max® 5 Day Turn-Around</b>	
Model-Less IPS e.max from your scan file 3 Day Turn-Around	85.00
IPS e.max - Crowns/Bridges/Veneers/Inlays	99.00
IPS e.max Cut Back & Layered	119.00
IPS e.max fabricated in Select Department 10 Day Turn-Around	260.00
<b>IPS Empress® 5 Day Turn-Around</b>	
IPS Empress Esthetic - Crowns/Veneers/Inlays	109.00
IPS Empress Esthetic Cut Back & Layered	129.00
IPS Empress Esthetic fabricated in Select Department 10 Day Turn-Around	260.00
<b>Lava® 5 Day Turn-Around</b>	
Porcelain to Zirconia Crowns/Bridges	149.00
Lava Zirconia Copings	69.00
Lava fabricated in Select Department 10 Day Turn-Around	260.00

 <b>Crown Tattoos</b>	<b>100.00</b>
--	---------------



## Digital Impressions

<b>Model-less 3 Day Turn-Around</b>	
Element-Z, Ultra-Z Esthetic or IPS e.max	85.00
Oral Temp CAD/CAM Provisionals	19.00
Screw-Retained Element-Z, Ultra-Z, IPS e.max crown 5 Day Turn-Around	292.00
<b>With a Printed Model 5 Day Turn-Around</b>	
Element-Z, Ultra-Z Esthetic or IPS e.max	99.00
Oral Temp CAD/CAM Provisionals	29.00
Forte YZr	139.00
Element-Z Lingual with Porcelain Facial	139.00
PFM (Refer to prices in PFM Section)	
<b>* Sirona Cerec Models</b> 9 Day Turn-Around	\$20 per set



## PFM Restorations

<b>5 Day Turn-Around</b>		
<b>*Conventional</b>		<i>Metal Occlusal</i>
Porcelain to Base	119.00	131.00
*Porcelain to Noble	139.00	165.00
*Porcelain to Hi-Noble White	149.00	175.00
*Porcelain to Hi-Noble Yellow	179.00	205.00
PFM fabricated in Select Department	(10 Day Turn- Around)	260.00
<b>Maryland Bridge 5 Day Turn-Around</b>		
Zirconia Maryland Bridge complete with wings		368.00
Porcelain Pontic, metal included		145.00
Wraps		38.00
Etch		38.00
Re-Etch		25.00

Call us at 1-800-354-2075 for more information

# Oral Arts pays the cost of shipping your case both ways! Call us today at 1-800-354-2075

Prices subject to change without notice. Published prices are base fees.

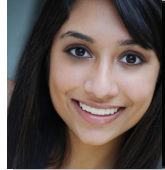
**\*Note:** All prices include metal where applicable, parts extra. Prices are subject to change without notice or surcharge due to the volatility of noble alloy prices.



## Oral Arts Select

10 Day Turn-Around	
Element-Z or Ultra-Z Esthetic	200.00
IPS e.max	260.00
IPS Empress Esthetic	260.00
Forte YZr	260.00
Lava	260.00
PFM	260.00
Select PMMA Hybrid (Bridge Only)	450.00
7 Day Turn-Around	
Indirect Composite 5 Day Turn-Around	
Gradia Composite - Inlays/Onlays/Crowns	129.00

	Base	Noble	Hi-Noble
Direct Post/Core	50.00	52.00	53.00
Indirect Post/Core	56.00	59.00	60.00
Telescopic Crown/Coping	75.00	80.00	82.00



## Combined Crown/Partial

3 Day Turn-Around	
Fixed Attachment Labor per arch	138.00
Construct to Fit Crown to Partial	49.00
Dolder or Hader Bar, plus metal	55.00
Hader Bar with Clip & Housing	89.00
Survey and Design Crown for Partial	40.00



## Crown & Bridge - Miscellaneous

3 Day Turn-Around			
	Base	Noble	Hi-Noble
*Metal Try-in	79.00	99.00	139.00
Add Porcelain to Metal Try-in			54.00
Cut Back and Layer Porcelain			20.00
Duplicate Model			13.00
Epoxy Model			40.00
Interlock			60.00
Milled Rest			63.00
Opposing Units, per unit			9.00
Pink Tissue, per unit			33.00
Porcelain Butt Margin			43.00
Pour and Return Models			25.00
Composite Acrylic Facing on Crown			40.00
Strip and Rebuild Porcelain, per unit			59.00
Reduction Coping			15.00



## Temporaries & Diagnostic Wax-Ups

4 Day Turn-Around	
Model-Less Oral Temp CAD/CAM Provisionals per unit 3 Day Turn-Around	19.00
Oral Temp CAD/CAM Provisionals, per unit	29.00
Oral Temp Fiber Force Reinforcement, per case	49.00
Screw-Retained Oral Temp	211.00
Diagnostic Wax-up	25.00
Surgical Tray/Prep Guide	23.00
Temporary Template	25.00
Duplicate Model	13.00



## Full Cast Restorations

3 Day Turn-Around	
Base Metal	109.00
*White Noble	139.00
Argenco Y + Yellow Noble (Flat fee no alloy surcharge)	175.00
*Yellow Noble	139.00
*White Hi-Noble Crown or Inlay	159.00
*Yellow Hi-Noble Crown or Inlay	159.00



## Dentures

5 Day Turn-Around	
<b>Economy Denture</b> Includes custom tray, bite rim, set-up & try-in, process and finish in Lucitone 199 Acrylic. Includes Economy Teeth	347.00

# Oral Arts pays the cost of shipping your case both ways! Call us today at 1-800-354-2075

Prices subject to change without notice. Published prices are base fees.

**\*Note:** All prices include metal where applicable, parts extra. Prices are subject to change without notice or surcharge due to the volatility of noble alloy prices.

Dentures Cont...	
<b>Premium Denture</b> Includes custom tray, bite rim, set-up & try-in, process and finish in Lucitone 199 Acrylic. Includes Premium Teeth	421.00
<b>IvoBase Premium Denture</b> Includes custom tray, bite rim, set-up & try-in, process and finish in IvoBase Premium Injection Acrylic. Includes Premium Teeth	453.00
<b>Immediate Denture with Economy Teeth</b> Includes: 6 extractions, setup, process, and finish with economy teeth.	273.00
<b>Immediate Denture with Premium Teeth</b> Includes: 6 extractions, setup, process, and finish with premium teeth.	347.00
<b>Ala Carte Dentures</b>	
Avoid Embarrassment Denture	150.00
Bite Rim	39.00
Bite Rim on IvoBase Base	90.00
Bite Rim on Processed Base	60.00
Bite Rim on Sprinkled Base	50.00
Custom Tray with Handle	39.00
Clear Duplicate Denture	100.00
Clear Duplicate Denture w/ Barium Sulfate	125.00
Denture Setup	45.00
FiberForce Reinforcement	105.00
Immediate, per tooth to be extracted	4.00
IvoBase Injection Processing Extra	32.00
Repair	90.00
Name in Denture	20.00
Process & Finish, Premium Acrylic	142.00
Soft Liner Process & Finish w/ Lucitone 199	200.00
Reset to New Bite	32.00
Strengthening Bar	34.00
Screw-Retained Set-up	75.00
Screw-Retained Reset	50.00
Teeth	Market Price
Try-in Wax Set-up	20.00
Rebase Denture	185.00
Same Day Rebase/Reline/Repair Denture	+40.00
Hard Reline	130.00
Soft Reline	155.00



## Partials

10 Day Turn-Around	
<b>Cast Chrome Partials</b>	Complete Partial includes Framework, Setup, and Premium Acrylic Finish
Includes initial try-in, without teeth	349.00
Conventional or Hidden Clasp Framework	150.00
Acrylic Partial, without teeth and clasps	142.00
<b>Ala Carte Partials</b>	
Attachment Labor per Arch	130.00
All Metal Dummy or Backing	40.00
Cast Clasp w/ laser weld (includes laser weld fee)	80.00
Complete Nesbit without teeth (Cast Unilateral)	200.00
Composite Facing on Metal Backing	40.00
Full Cast Base	125.00
Repair Cast/Flexible	90.00/105.00
Occlusal Onlay	47.00
Partial Bite Rim	32.00
Process & Finish, Lucitone 199	142.00
Reline	130.00
Set-up Cast/Flexible	37.00/61.00
Swing Lock/DE Hinge Partial Frame	325.00
Try-in Wax Set-up	20.00
Wrought Wire Clasp	30.00
<b>Cu-sil® Partials</b>	
10 Day Turn-Around	
Set-up	45.00
Process & Finish, Premium Acrylic	271.00
Try-in Wax Set-up	20.00
Cu-sil® Gasket Reline	160.00
Cu-sil® Hard Reline & Gasket Reline	250.00
Cu-sil® Cleaner	10.50

# Oral Arts pays the cost of shipping your case both ways! Call us today at 1-800-354-2075

Prices subject to change without notice. Published prices are base fees.

**\*Note:** All prices include metal where applicable, parts extra. Prices are subject to change without notice or surcharge due to the volatility of noble alloy prices.



## Flexible Partial

6 Day Turn-Around	
DuraFlex Partial & TCS Unbreakable w/ Economy Teeth	260.00
Unilateral TCS Unbreakable or DuraFlex Partial (does not include price of teeth)	167.00
Flexible Metal Combo w/ Economy Teeth	342.00
All Metal Dummy or Backing	40.00
Composite Facing	40.00
Flexible Partial Adjustment Kit	67.00
Flexible Partial Occlusal Rest	40.00
Process and Finish	199.00
Repair	105.00
Set-up	61.00
Try-in Wax Set-up	20.00
Flexible Partial Denture Cleaner	18.00

## Implant Fee Schedule: Predictable Package Pricing

*\*Prices not applicable to the Straumann Synocra platforms and BioHorizons 3.0 platforms.*



## Restorations Over Custom CAD/CAM Abutments

### 10 Day Turn-Around

Crown over custom abutment price includes: shipping both ways, model work with soft tissue, lab analog and screw, Custom Titanium or Zirconia abutment, final crown, and clinical screw. **Additional implant parts, if needed, are not included.** **Prices shown are for the following implant platforms only:** Astra Tech, BioHorizons, Biomet 3i, Nobel Biocare, Straumann Bone Level Implant, Zimmer

Element-Z Solid Zirconia, Ultra-Z Esthetic, IPS e.max, or Lava Ultimate Crown (with Custom Ti or Zr Abutment)	368.00
Forte YZr Porcelain to Zirconia Crown (with Custom Ti or Zr Abutment)	408.00
PFM Non-Precious Crown* (with Custom Ti)	388.00
<i>*Noble and High Noble Crown alloy surcharge not included</i>	



## Screw-Retained Implant Restorations

Screw-retained crown price includes: model work with soft tissue, MZ adapter, implant labor, lab analog, lab screw, and final crown. **Additional implant parts, if needed, are not included.** **Prices shown are for the following implant platforms only:** Astra Tech, BioHorizons, Biomet 3i, Branemark, Nobel Biocare, Straumann Bone Level Implant, Zimmer

Element-Z, Ultra-Z Esthetic, or IPS e.max Screw-Retained Crown 5 Day Turn-Around	306.00
--	--------

Model-less Element-Z, Ultra-Z Esthetic, or IPS e.max Screw-Retained Crown 5 Day Turn-Around	248.00
<i>*Prices for items below do not include alloy surcharge or UCLA</i>	
Screw-Retained PFM High Noble White* 10 Day Turn-Around	284.00
Screw-Retained Oral Temp 5 Day Turn-Around	211.00
<i>*Noble and High Noble alloy surcharge not included</i>	



## Custom Abutments

10 Day Turn-Around	
OAL Custom Titanium Abutment	225.00
OAL Custom Zirconia Abutment with Ti-Base	225.00
OAL Custom Titanium Gold Hue Abutment	245.00
3i Encode Custom CAD/CAM Titanium Abutment w/ Gold Screw, Analog, Robocast	478.00
Atlantis Custom Titanium Abutment	359.00
Atlantis Custom Titanium Gold Hue Abutment	398.00
BioHorizons Custom Titanium Abutment	389.00
BioHorizons Custom Titanium Abutment with Laser-Lok	419.00
BioHorizons Custom Zirconia Abutment	336.00
Nobel Biocare Custom Titanium or Zirconia	319.00
Straumann Custom All Zirconia Abutment	429.00
Straumann Custom Titanium Abutment	369.00
Straumann Custom Zirconia Abutment with Ti-Base	396.00
Anodize Gold or Pink Existing Implant Component	40.00



## Element-Z Screw-Retained Hybrid

### 10 Day Turn-Around

**Price w/parts Includes:** Shipping to and from lab for all steps, 2 soft tissue models, 4 Implant Analogs, Verification Jig with 4 cylinders, Bite Rim, Screw-Retained Setup w/2 cylinders & Wax Try-In w/ Economy Teeth, implant labor, Comfort H/S bite splint and final bridge with pink tissue and new cylinders.

**Prices shown are for the following implant platforms only:** Astra, Zimmer, Biohorizons, Biomet 3i, Straumann bone level, Nobel Biocare, Implant Direct Legacy. **\*Multi-unit abutments or additional implant parts are not included.**

Bridge only w/o parts or preliminary steps	1,493.00
Element-Z Screw-Retained Hybrid w/ 4 implants w/parts	2,778.00
Element-Z Screw-Retained Hybrid w/ 5 Implants w/parts	2,935.00
Element-Z Screw-Retained Hybrid w/ 6 Implants w/parts	3,092.00

# Oral Arts pays the cost of shipping your case both ways! Call us today at 1-800-354-2075

Prices subject to change without notice. Published prices are base fees.

**\*Note:** All prices include metal where applicable, parts extra. Prices are subject to change without notice or surcharge due to the volatility of noble alloy prices.

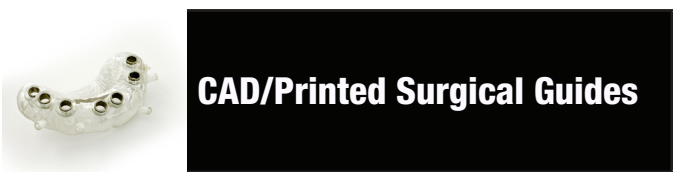
Element-Z Screw-Retained Hybrid Cont...	
SELECT Zirconia Hybrid cut back & layered teeth and gingiva (bridge only) w/o parts	3,493.00
SELECT Zirconia Hybrid cut back & layered teeth and gingiva w/4 implants w/ parts	4,778.00
SELECT Zirconia Hybrid cut back & layered teeth and gingiva w/5 implants w/ parts	4,935.00
SELECT Zirconia Hybrid cut back & layered teeth and gingiva w/6 implants w/ parts	5,092.00
SELECT PMMA Hybrid (Bridge Only) 7 Day Turn-Around w/o parts	450.00
CAD/CAM PMMA Hybrid with Pink Composite w/o parts	330.00



## Stand Alone Crown & Bridge Implant Items

10 Day Turn-Around

Epoxy Model for Pour Direct Cases	40.00
Soft Tissue Model	25.00
Zirconia Hybrid Labor per arch	91.00
Screw-Retained Crown Labor per unit	91.00
Prepare Stock Implant Abutment	100.00
Verification Jig without Parts	80.00
Anodize Gold or Pink Existing Implant Component	40.00
Implant Crown Rush Fee	50.00/per unit/ per day
Custom Wax/Cast Abutment Labor	150.00



## CAD/Printed Surgical Guides

5-15 Day Turn-Around

Surgical Planning (Per Plan)	150.00
CAD Printed Surgical Guide	125.00



## Implant Removable and Fixed Removable

10 Day Turn-Around

Prices will vary for more implant components or attachments than are shown below. **Additional implant parts, if needed, are not included.** CAD/CAM bar prices shown are for the following implant platforms only: Astra Tech, BioHorizons, Biomet 3i, Branemark, Nobel Biocare, Straumann, Thommen, Zimmer

Implant removable and fixed removable cont...	
<b>Mini Implant Overdenture on 2 Implants w/ Economy Teeth</b> (Price includes: Shipping to and from lab for all steps, 2 Analogs, 2 O-Ring Housings, Labor, Model Work, Custom Tray, Bite Rim, Setup & Wax Try-In, Process & Finish with Economy Teeth)	615.00
On 2 Implants w/ Premium Teeth	689.00
On 3 Implants w/ Economy Teeth	675.00
On 3 Implants w/ Premium Teeth	749.00
On 4 Implants w/ Economy Teeth	735.00
On 4 Implants w/ Premium Teeth	809.00
On 5 Implants w/ Economy Teeth	795.00
On 5 Implants w/ Premium Teeth	869.00
<b>Locator Overdenture on 2 Implants w/ Economy Teeth</b> (Price includes: Shipping to and from lab for all steps, 2 Locator Abutments, Analogs, Housings, Labor, Model Work, Locator, Bite Rim, Setup & Wax Try-In, Process & Finish with Economy Teeth) Call for Straumann pricing	1,016.00
On 2 Implants w/ Premium Teeth	1,090.00
On 3 Implants w/ Economy Teeth	1,264.00
On 3 Implants w/ Premium Teeth	1,338.00
On 4 Implants w/ Economy Teeth	1,512.00
On 4 Implants w/ Premium Teeth	1,586.00
On 5 Implants w/ Economy Teeth	1,760.00
On 5 Implants w/ Premium Teeth	1,834.00
<b>Screw-Retained Hybrid Denture on 4 Implants w/ Economy Teeth</b> (Price includes: Shipping to and from lab for all steps, 2 soft tissue models, 4 Implant Analogs, Verification Jig with 4 cylinders, Bite Rim, Screw-Retained Setup w/4 cylinders & Wax Try-In, Precision-Milled Titanium Bar & Screws, Labor, Comfort H/S bite splint, IvoBase Process & Finish with Economy Teeth) Prosthetic Screws extra	2,549.00
On 4 Implants w/ Premium Teeth	2,623.00
On 5 Implants w/ Economy Teeth	3,019.00
On 5 Implants w/ Premium Teeth	3,093.00
On 6 Implants w/ Economy Teeth	3,489.00
On 6 Implants w/ Premium Teeth	3,563.00

## Locator CAD/CAM Milled Bar Overdenture w/ Economy Teeth

(Price includes: Shipping to and from lab for all steps, Implant Analogs, Housings & Attachments, Verification Index, Precision-Milled Titanium Bar, Labor, Model Work, Bite Rim, Screw Retained Setup & Wax Try-In, Process & Finish with Economy Teeth) Prosthetic Screws extra

# Oral Arts pays the cost of shipping your case both ways! Call us today at 1-800-354-2075

Prices subject to change without notice. Published prices are base fees.

**\*Note:** All prices include metal where applicable, parts extra. Prices are subject to change without notice or surcharge due to the volatility of noble alloy prices.

CAD/CAM Milled Bar Overdenture Cont...	
On 2 Implants w/ Economy Teeth	1,741.00
On 2 Implants w/ Premium Teeth	1,815.00
On 3 Implants w/ Economy Teeth	2,305.00
On 3 Implants w/ Premium Teeth	2,379.00
On 4 Implants w/ Economy Teeth	2,969.00
On 4 Implants w/ Premium Teeth	3,043.00
On 5 Implants w/ Economy Teeth	3,399.00
On 5 Implants w/ Premium Teeth	3,473.00
On 6 Implants w/ Economy Teeth	3,829.00
On 6 Implants w/ Premium Teeth	3,903.00

Nightguards, splints, and bleaching trays Cont...	
Day Guard	101.00
Gelb Splint	102.00
Hard Acrylic Splint Sprinkled	87.00
Helmet Strap	22.00
IvoBase Clear Injection Splint	131.00
Soft Splint	47.00
Variflex H/S Splint (Heat Softened)	139.00
Vacuum Splint Hard	48.00



## Stand Alone Denture Implant Items



## Sleep Apnea Devices

10 Day Turn-Around	
Locator/O-Ring Attachment Overdenture Labor per arch	138.00
Pour and Return Models (3 Day Turn-Around)	25.00
Screw-Retained/Implant Retained Bite Rim	49.00
Screw-Retained Hybrid Denture Labor per Implant	42.00
Screw-Retained Process & Finish	200.00
Screw-Retained Setup	75.00
Screw-Retained Reset	50.00
Soft Tissue Model	25.00
Surgical Implant Guide	96.00
Titanium CAD/CAM Implant Bar 4 implants	1,456.00
Titanium CAD/CAM Implant Bar 5 implants	1,820.00
Titanium CAD/CAM Implant Bar 6+ implants	2,184.00
Verification Jig without parts	80.00

5 Day Turn-Around	
TAP 3 Elite TL	371.00
myTAP 1 Day Turn-Around	121.00
dreamTAP	389.00
myTAP/dreamTAP Patient Education Kit w/display case	250.00
Myerson EMA First Step Doctors Kit	71.00
Myerson EMA First Step Appliance	91.00
Myerson EMA Sleep Apnea Device	207.00
QuietNite Sleep Appliance	279.00



## Nightguards, Splints, Sports Mouthguards & Bleaching Trays



## SomnoMed

5 Day Turn-Around	
AstronCLEAR Splint	91.00
AstronCOLOR Splint	101.00
Bite Soft Splint	119.00
Bleaching Tray	50.00
Clear Sports Mouthguard	54.00
Colored Sports Mouthguard	71.00
Comfort H/S Splint	59.00
Colored Comfort H/S Splint	79.00
Comfort Hard Splint	49.00

21 Day Turn-Around	
<b>SomnoMed Signature Line</b>	
SomnoDent Flex	525.00
SomnoDent Edent - Flex	620.00
SomnoDent - Classic	475.00
SomnoDent Edent - Classic	565.00
SomnoDent Classic - Lingualless	475.00
SomnoDent G2 - Flex	625.00
SomnoDent G2 - Classic	625.00
SomnoDent G2 Edent - Flex	720.00
SomnoDent Fusion - Classic	550.00
SomnoDent Fusion - Flex	550.00
<b>SomnoMed Standard Line</b>	
SomnoDent Air	330.00
SomnoDent Air +	350.00

# Oral Arts pays the cost of shipping your case both ways! Call us today at 1-800-354-2075

Prices subject to change without notice. Published prices are base fees.

**\*Note:** All prices include metal where applicable, parts extra. Prices are subject to change without notice or surcharge due to the volatility of noble alloy prices.

SomnoMed Cont...	
Standard - Bite Ramp	20.00
Standard - Anterior Opening	20.00
Standard - ER Hooks	20.00
Standard - Model Pour	10.00
SomnoDent Air - Extended Warranty - 1 year	75.00
SomnoDent Air - Extended Warranty - 2 year	120.00
Telescopic Herbst - Classic	365.00
Telescopic Herbst - Flex	395.00
SomnoDent Herbst Advance - Flex	405.00



## Orthodontics

5 Day Turn-Around	
Circumferential Hawley	57.00
Customized Hawley	28.00
Essix Retainer	52.00
Hawley Retainer w/clasps	53.00
Invisible Retainer	52.00
Modified Hawley	62.00
Modified Spring Retainer 6/6	82.00
Per tooth reset	17.00
Spring Retainer 3/3 or 4/4	47.00

### Functional Appliances

6 Day Turn-Around	
Schwartz	125.00
Upper or Lower Sagittal with 2 screws	142.00
Upper or Lower Sagittal with 3 screws	178.00

### Fixed Appliances (bands not included)

3 x 3 Lingual Arch	41.00
6 x 6 Lingual Arch	46.00
Bonded Palatal Expander w/ Hyrax Screw	117.00
Palatal Expander w/ Hyrax Screw	89.00

### Fixed Appliances (bands not included)

HAAS Palatal Expander	103.00
Habit or Crib	72.00
Nance	52.00
Quad-Helix	67.00
Space Maintainers	39.00

### Additional

Adams or Ball Clasp, each	30.00
Auxiliaries or Finger Springs	17.00
Each Band	17.00
Expansion Screw	31.00
Labial Bow	27.00
Lingual Bar	25.00
Repair	40.00
Orthodontic Models, per set	51.00
Plastic Teeth	Market Price
Solder Hook or Solder Pin	17.00
Colored Retainers	
First color Extra	3.00
Each Additional Color	6.00
Ortho Wrought Wire Clasp	30.00



## Clinician's Choice Quad-Tray Xtreme Disposable Metal Impression Trays

### Quad-Tray Xtreme

Posterior Quad-Tray (50 pack)	91.00
Posterior Quad-Tray (250 pack)	375.00
Anterior Quad-Tray (50 pack)	95.00
Quad-Tray Trial Pack (20 posterior, 20 XL, 10 anterior)	88.00

### Quad-Tray XL

Extra Long Full Quadrant (40 pack)	88.00
------------------------------------	-------



## Adjustment Kits

Komet Lithium Disilicate & Solid Zirconia Adjustment Kit	79.00
Flexible Partial Adjustment Kit	67.00

### Flexible Partial Kit Replacement Parts

Dedeco 6105 Red Trimmers	8.00
TCS Green Points 4501-01	1.00
TCS Small Rubber Points 4511-01S	2.00
Spiral/Corkscrew Mandrel	1.00
Shofu FL-2 Stones	3.00
Dedeco 4593 Blue Points	1.00